

CALLING ALL SERVICE USERS AND CARERS

CPAA Art Competition

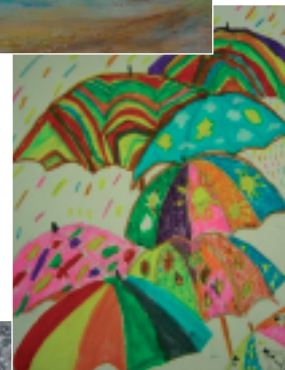
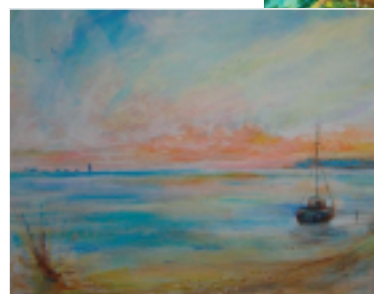
We are looking for four seasonal designs for the front covers of the CPAA Association's journal **'The Approach'**. The journal is produced on a quarterly basis and the winners' artwork will be produced on the covers of next years editions of spring, summer, autumn and winter.

All entries must be of your own design, and can be in the following mediums: paintings, drawings, collages, computer generated artwork and photographs.

All artwork submitted must be in no larger than A3. If you do not wish to submit your original artwork we will accept scanned images of your artwork as long as they are of high resolution. Computer generated artwork and digital photographs must be submitted to us electronically via email or on disc.

The closing date for the competition is 1st December and winners will be notified during the week beginning 4th January 2010. All original artwork will be returned and copyright will remain with the artist.

A prize will be awarded to each of the winners - £30 of artist materials and a year's free subscription to **'The Approach'**. The winners will be featured in the winter 2010 edition.



COMPETITION ENTRY FORM

PLEASE PRINT DETAILS

NAME:

ADDRESS:

POST CODE..... TEL. NO:

TITLE OF COMPOSITION:

MEDIUM(S) USED:

SEASON DEPICTING (delete where appropriate):

SPRING SUMMER AUTUMN WINTER

Please return completed form to:
Denise Baxendale, CPAA, Walton Hospital,
Whitecotes Lane, Chesterfield, S40 3HW
Email: cpa.association@derbysmhservices.nhs.uk

